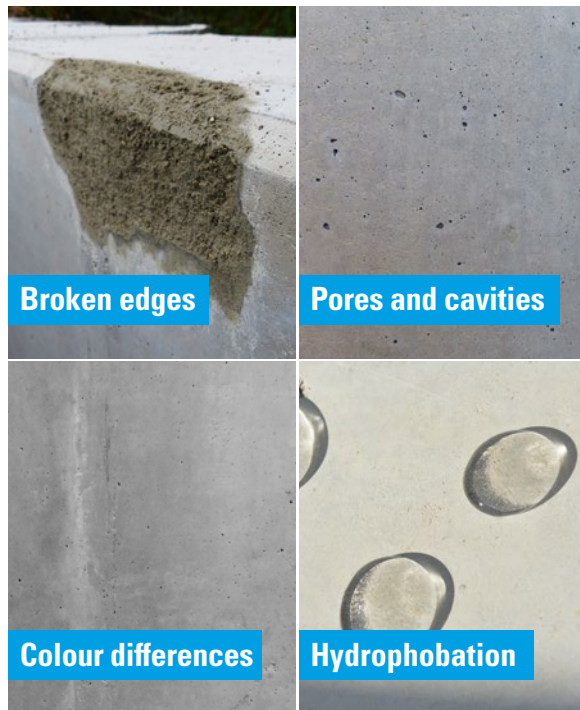


Get a first-class fair-faced finish



With cosmetic fillers and retouch from MC-Bauchemie, concrete surface imperfections such as

- flaking,
- pores,
- pitting,
- blowholes,
- colour differences

can be rectified quickly, simply and effectively to deliver a first-class fair-faced finish.

Concrete cosmetics for precast elements

System solutions from reprofiling to surface finish

MC's concrete cosmetics products at a glance:

- bonding agent
- coarse fillers
- fine fillers
- fine fillers for floors
- concrete retouch
- hydrophobic agents

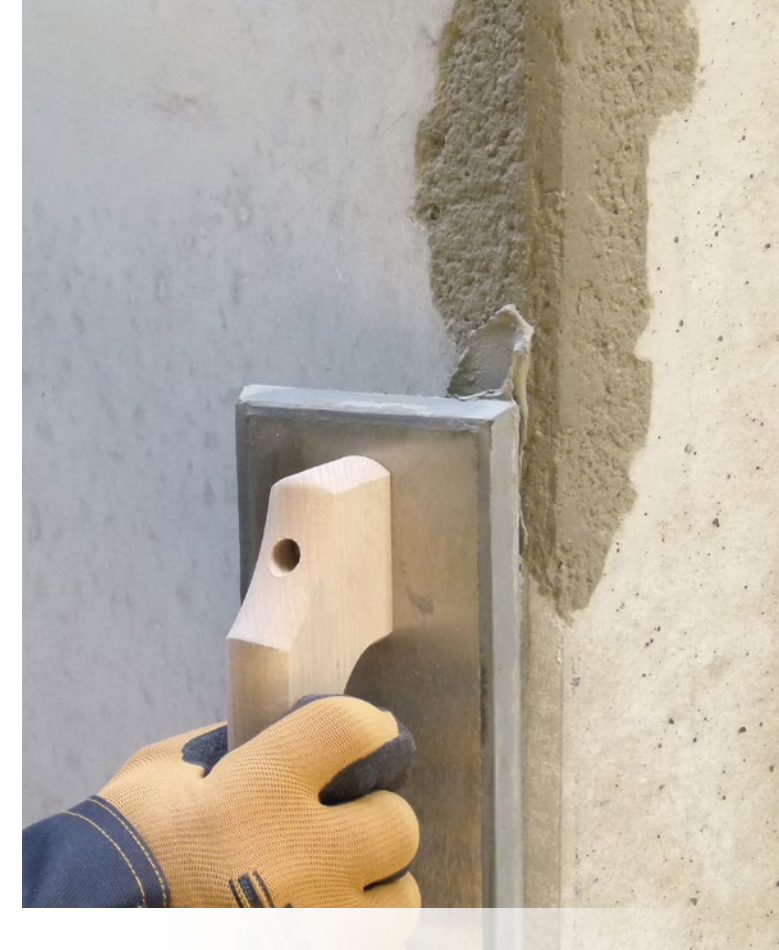
MC-Bauchemie Müller GmbH & Co. KG
Concrete Industry
Am Kruppwald 1-8
46238 Bottrop
Germany

Phone: +49 2041 101-50
Fax: +49 2041 101-588

CI@mc-bauchemie.com
www.mc-bauchemie.com



Contact details



Facelift for your precast elements

System solutions for reprofiling and surface finish

EXPERTISE
CONCRETE COSMETICS



Broken edges

Reprofiling broken edges up to 80 mm

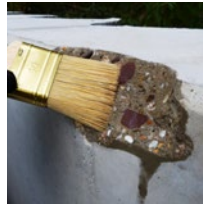
Step 1: Substrate preparation

The substrate must be clean and free from all loose particles, dust, oil and other contaminants. Cement residues must be removed completely.



Step 2: Pre-wetting

Before the fine or super-fine filler is applied, the substrate must be pre-wetted thoroughly. Highly absorbent substrates must be pre-wetted several times.



Step 3: Bonding agent

Mix Emcefix-Haftbrücke and brush it carefully in the matt damp pre-wetted substrate. Suitable for this is a brush.



Step 4: Reprofile with coarse filler

Stir Emcefix-Spachtel G with water and reprofile the broken edge with some excess. Cut the contours once the coarse filler is slightly stiffened.



Step 5: Concrete finish with fine filler

To achieve a smooth surface use Emcefix-Spachtel F lang on top of the coarse filler. For horizontal applications use Emcefix floor.



Step 6: Result

Finally the broken edge is reprofiled and in optically in the desired state.



Pores and cavities

Filling pores and cavities up to 6 mm

Step 1: Substrate preparation

The substrate must be clean and free from all loose particles, dust, oil and other contaminants. Then pre-wet the surface.



Step 2: Mixing

Mix Emcefix-Spachtel F with water. All fillers can be mixed by hand or with a mixer.



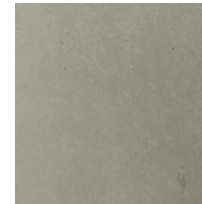
Step 3: Application

Pores and cavities filled with Emcefix-Spachtel F using MC-Tool Rubber or a steel float. For horizontal applications use Emcefix floor.



Step 4: Result

Finally the pores and cavities are filled and share a smooth surface.



Your benefits:



Emcefix Spachtel F is available in several colours and even mixable with each other to reach the exact colour.

Pro hint for application:



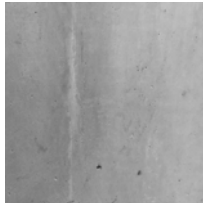
Protection: Surfaces treated with concrete cosmetics must be protected when fresh from sunlight, wind or rain.

Colour differences

Retouching concrete with unique concrete look

Step 1: Substrate preparation

All substances likely to reduce adhesion and all loose particles must be removed.



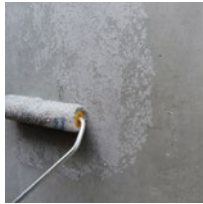
Step 2: Mixing

First mix Repacryl with water in a ratio of 1:1 to 1:3 to reach the desired mixture.



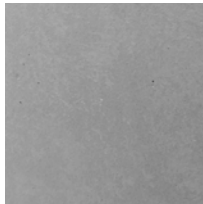
Step 3: Application

Repacryl is applied with a sponge or a roller. For spraying Repacryl please contact us.



Step 4: Result

Finally your concrete shares unique concrete look with the help of Repacryl.



Pro hint for application:



To match the exact colour of your precast use several colours of Repacryl and apply it on a test area to obtain the right colour.

Pro hint for application:



To reduce water adsorption of the precast elements Emcephob L can be applied.